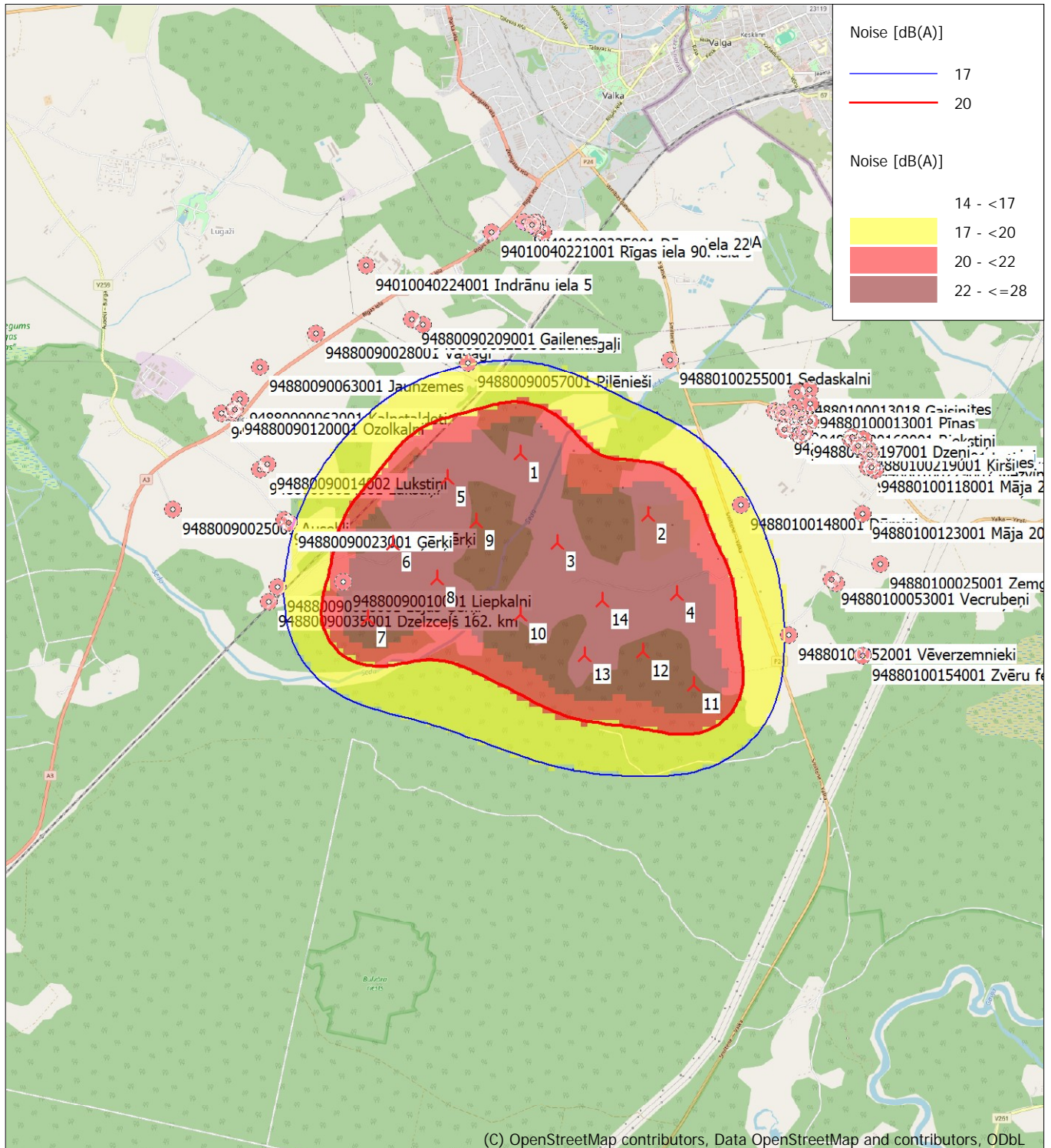


## DECIBEL - Map 6.0 m/s Regular dwellings

Calculation: Nordex N163-7.0 MW STE

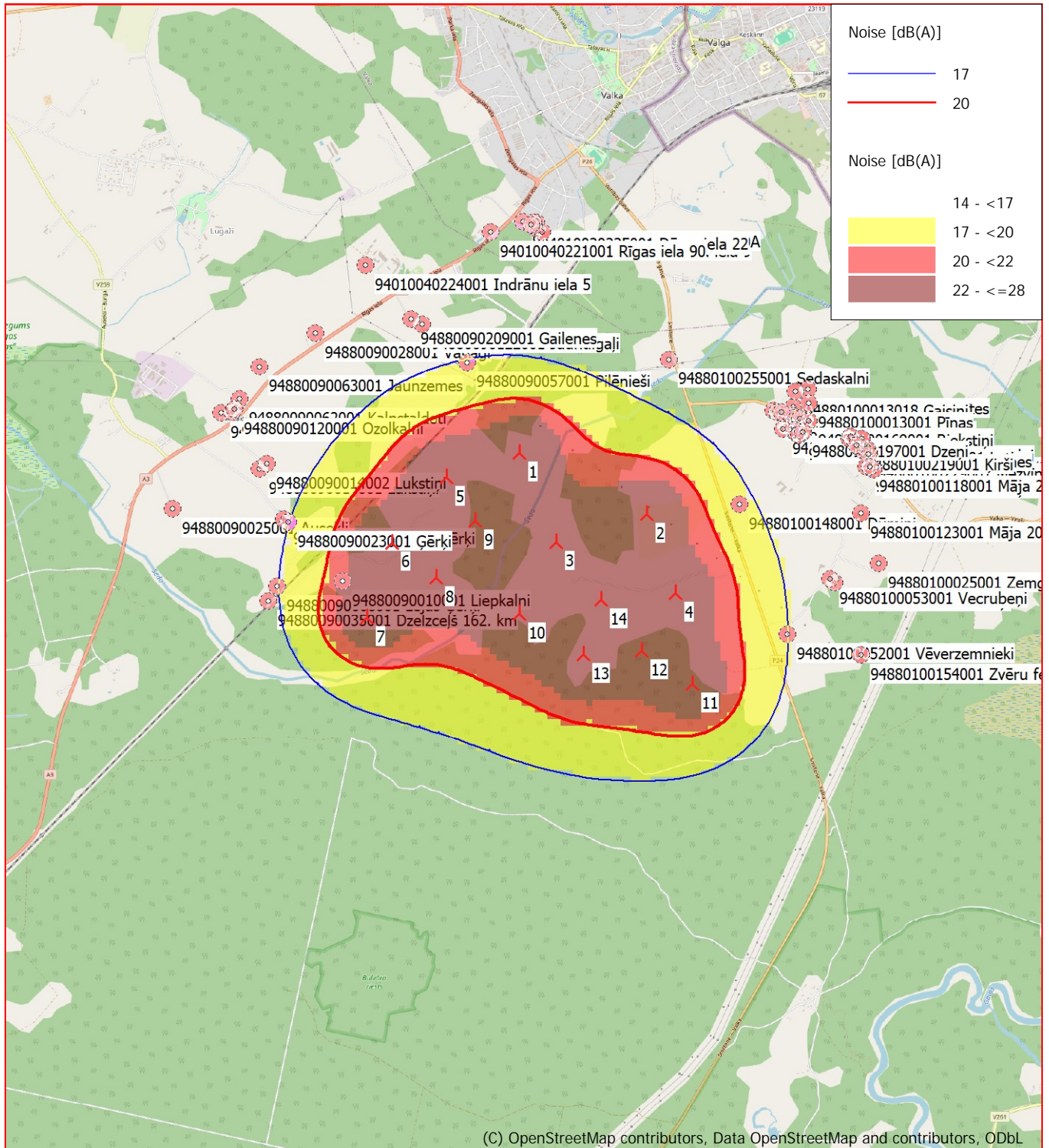


Map: EMD OpenStreetMap, Print scale 1:50,000, Map center Geo WGS84 East: 26.004079° E North: 57.736118° N  
 New WTG Noise sensitive area  
 Noise calculation model: Danish low frequency 2024. Wind speed: 6.0 m/s Regular dwellings  
 Height above sea level from active line object



## DECIBEL - Map 8.0 m/s Regular dwellings

Calculation: Nordex N163-7.0 MW STE



0 500 1000 1500 2000 m

Map: EMD OpenStreetMap, Print scale 1:50,000, Map center Geo WGS84 East: 26.004079° E North: 57.736118° N  
New WTG Noise sensitive area  
Noise calculation model: Danish low frequency 2024. Wind speed: 8.0 m/s Regular dwellings  
Height above sea level from active line object